

These materials were developed under the auspices of CalRecycle for specific technical training presentations and are posted as reference documents for the local government and CalRecycle staff who attended this technical training series. They are not intended to stand alone as informational or training materials.

If you require assistance in obtaining access to the presentations, call the Public Affairs Office at (916) 341-6300 or Dennis Corcoran at (916) 341-6395.

Adding Diversion at an Existing Facility: A case study in Orange County

By

Kathryn Cross

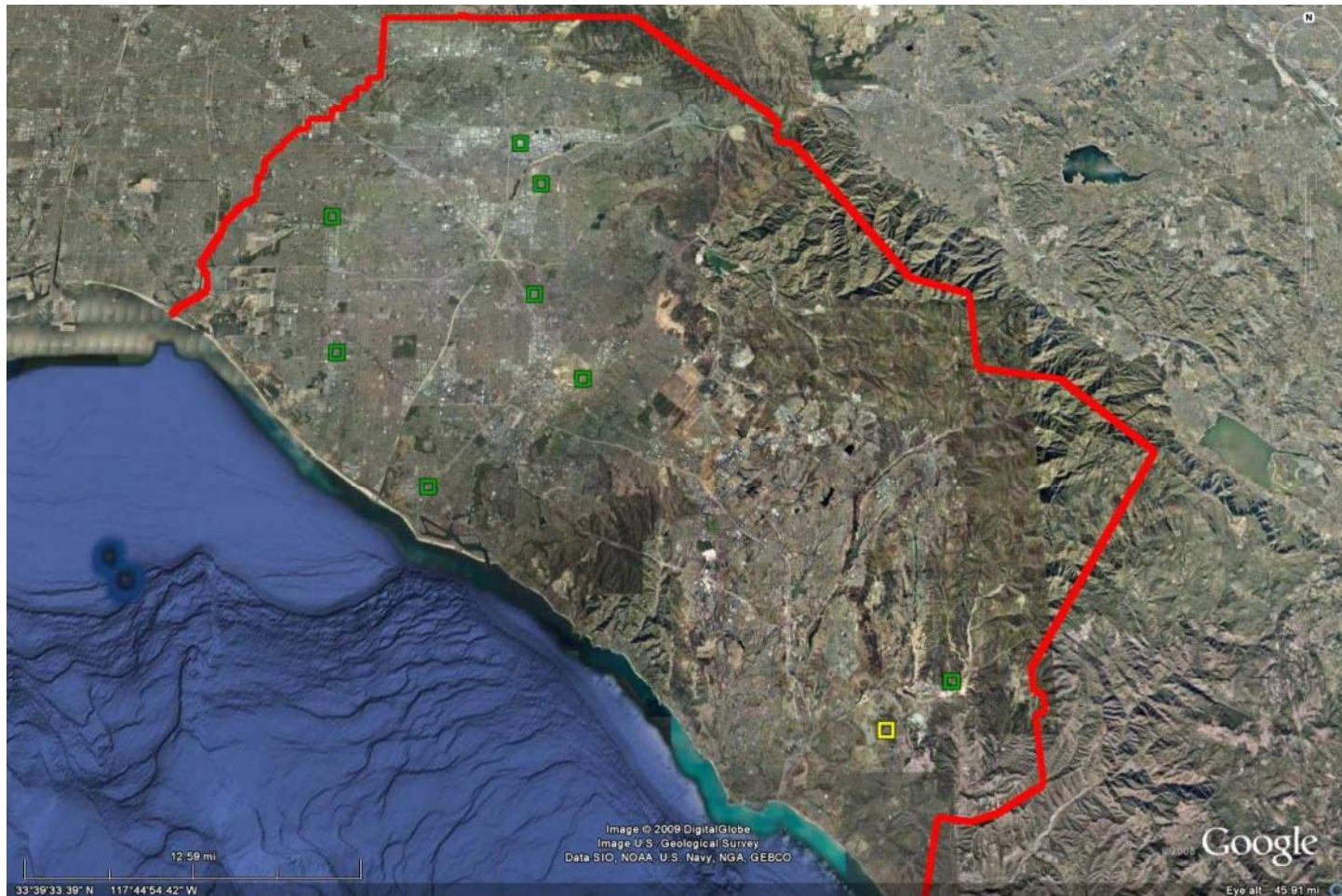
Orange County LEA



Orange County scenario

- South Orange County cities requested a materials recovery facility (MRF) to help meet diversion goals; all MRFs located in North or Central Orange County.
- Proposed MRF at existing landfill in South Orange County; the landfill is county operated.
- The proposed MRF would be operated by a private company.

Location of Orange County MRFs



Options available

- Option 1: Revise the existing full permit for the landfill; adding conditions for the operation of the MRF.
- Option 2: Give the new MRF facility a separate full permit and revise the existing full permit for the landfill.

- Option 2 was chosen

CEQA Issues Encountered

- The landfill operator (County) was the Lead Agency for the MRF CEQA process.
- The Lead Agency completed a Mitigated Negative Declaration for the MRF.
- No traffic study for the MRF; deferred to the landfill EIR.
- Landfill EIR: traffic and tonnage related.

CEQA and Permit Issue

- Landfill permitted tonnage supported by CEQA: 4,000 tons/day
- Proposed tonnage for MRF: 1,000 tons/day
- Total tonnage: $4,000 + 1,000 = 5,000$
 - not supported by CEQA.
 - Diversion of self haul, so tonnage should not be increased as stated in the Negative Declaration.

Resolution of Issues

- Landfill and proposed MRF had to share tonnage allocation in original EIR.
- Conditions placed in each permit regarding tonnage.
 - Example: The operator of the MRF shall comply with the request of the landfill operator to stop receiving waste at the MRF to ensure the total combined daily tonnage is not exceeded.
- Landfill has priority to 4,000 tons/day.

The End

Thank you